

HealthSights: Behavioral Health

July 2021 - September 2021

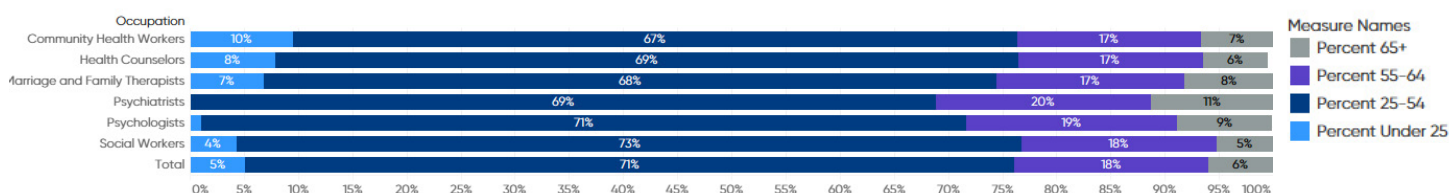
Data from the third quarter of 2021, including July, August and September, showed a decrease in employer demand levels for behavioral health occupations in the State of Michigan. There were 316 less postings (10.3 percent) during Q3 2021 than in Q2 2021, and 233 more postings (9.3 percent) than during Q3 2020. This suggests a rebound to 2020 hiring levels after a brief decline in the past few months. Interestingly, after steadily rising through May 2021, Psychologists have seen their numbers decline, while Health Counselors have seen their demand numbers rise.

Online job postings can represent the ceiling of demand for behavioral health jobs in the State of Michigan, but only if employers are actively advertising online. This results in certain jobs being overrepresented by job postings in relation to the actual number of positions available, while other jobs are underrepresented.

Wages

Occupation	Pct. 10 Hourly Earnings	Pct. 25 Hourly Earnings	Median Hourly Earnings	Pct. 75 Hourly Earnings	Pct. 90 Hourly Earnings
Child, Family, and School Social Workers	16.3	19.7	24.6	29.6	33.0
Clinical, Counseling, and School Psychologists	22.9	29.3	36.9	47.8	66.1
Community Health Workers	15.7	17.9	21.8	27.3	35.3
Healthcare Social Workers	18.1	22.5	27.5	31.7	37.8
Industrial-Organizational Psychologists	18.1	24.2	33.3	48.8	68.6
Marriage and Family Therapists	16.4	19.2	22.3	26.4	32.8
Mental Health and Substance Abuse Social Workers	16.1	19.4	23.5	28.9	34.0
Psychiatrists	34.9	62.4	99.2	107.7	164.4
Psychologists, All Other	19.6	24.4	43.9	54.1	58.3
Rehabilitation Counselors	12.0	14.2	20.0	27.5	32.4
Social Workers, All Other	16.0	19.5	26.3	36.4	41.7
Substance Abuse, Behavioral Disorder, and Mental Health Counselors	15.5	18.3	23.1	28.8	34.3

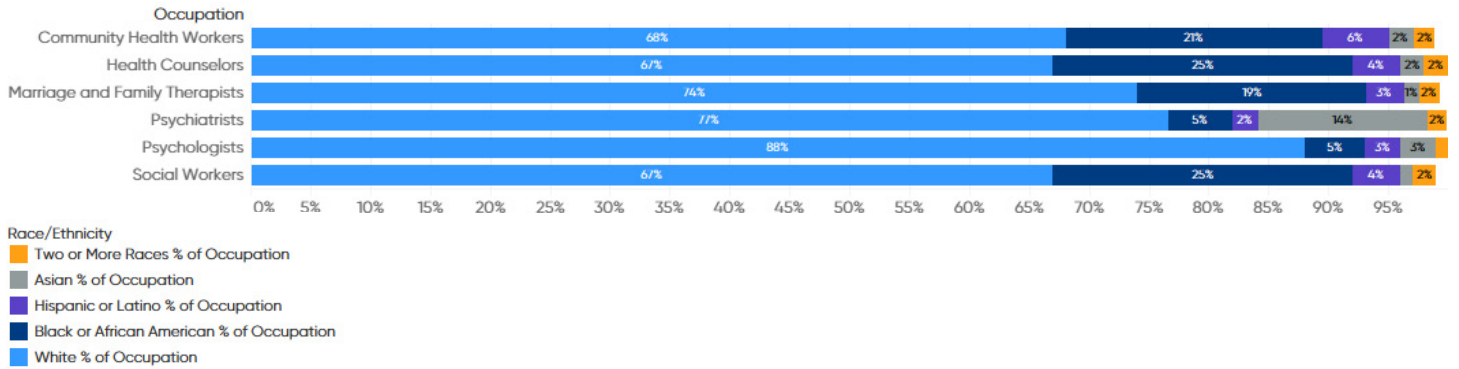
Age



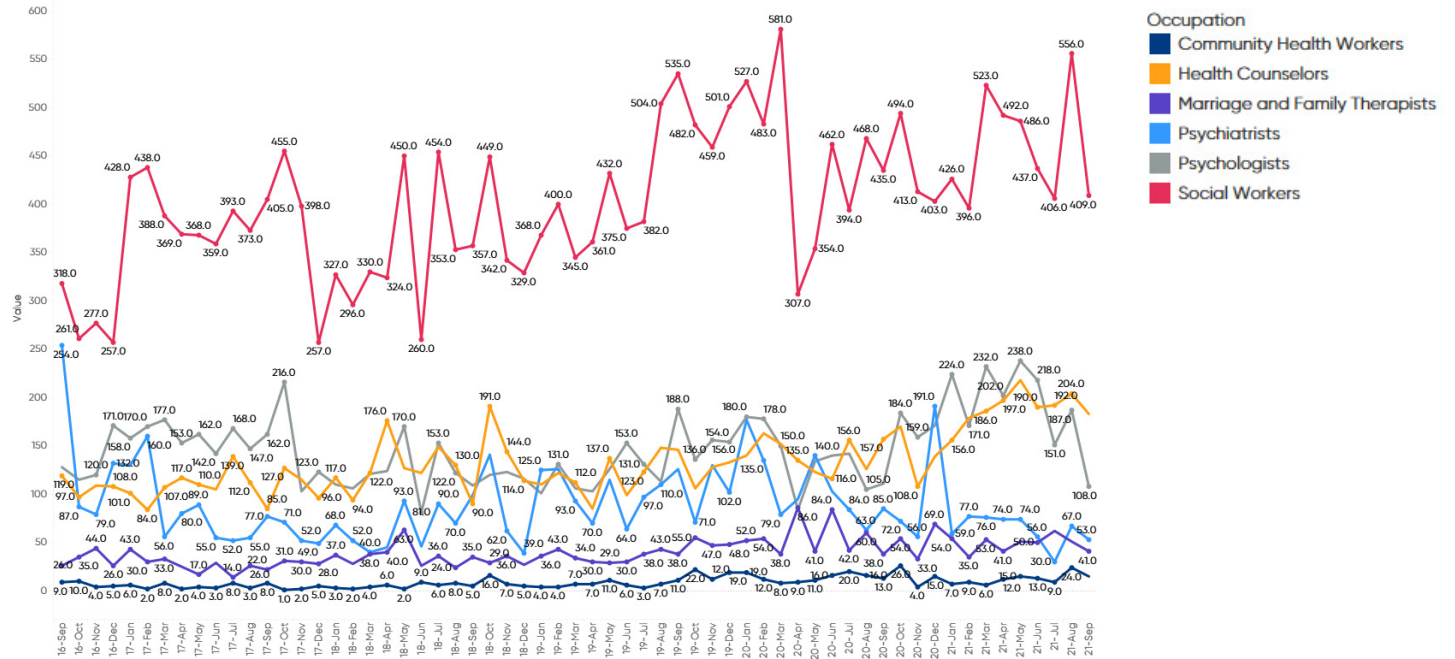
During 2020, there were 40,872 individuals working in behavioral health in the State of Michigan. 79 percent of the workforce was female, while 21 percent were male. While most of those working in Michigan were white (69 percent), African American or Black workers accounted for 23 percent of the workforce and Asian workers were two percent. Those identifying as having a Hispanic or Latino ethnicity accounted for four percent. The majority of the workforce (71 percent) was between the ages of 25 and 54, but a fifth (18 percent) were between 55-64, and may be approaching retirement.

Generally, completions for behavioral health have remained steady since 2013, with the exception of social workers, who saw a decline in 2017.

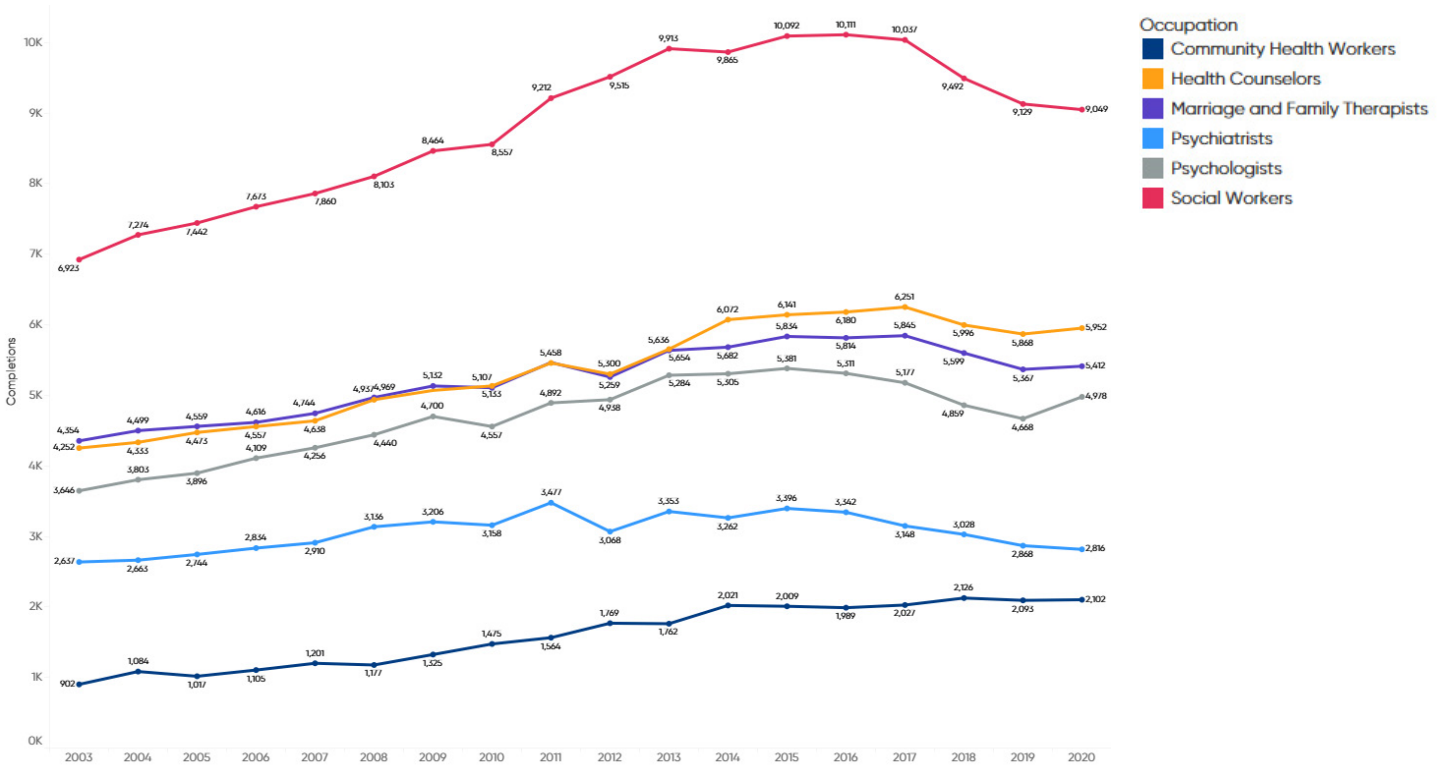
Race/Ethnicity



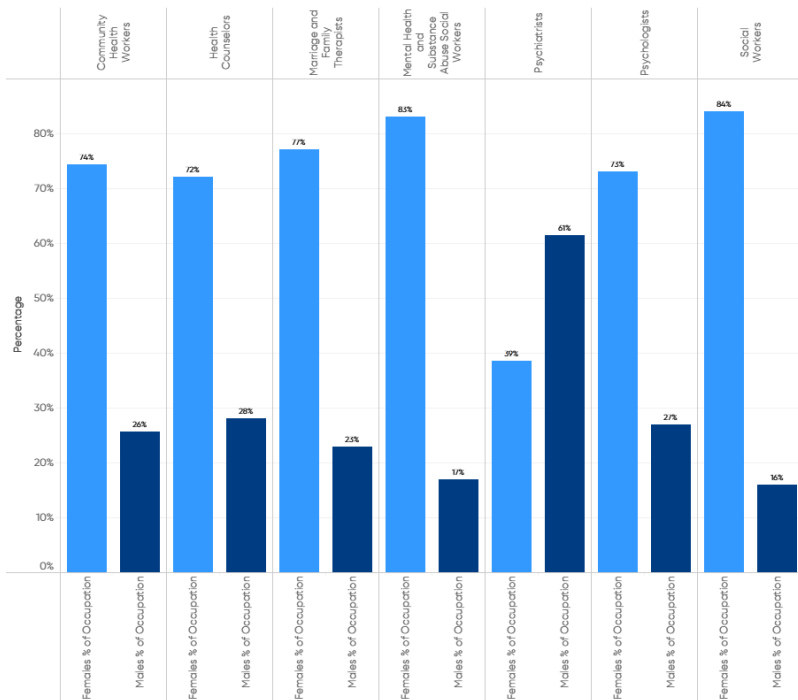
Employer Demand Over Time



Education Completion



Sex



Sex

- Females % of Occupation
- Males % of Occupation

Learn More

MHC Insight provides current, actionable traditional and real-time labor market data to assist with crucial decision-making in Michigan's healthcare economy. Learn more at mhc.org/insight.

To request custom data and research for your organization, please contact Michelle Wein for a personalized consultation.

phone: 517-329-5879

email: michelle.wein@mhc.org

web: mhc.org/insight

Source: EMSI, Analysis: MHC